



2016 BENZ NTG5.0/ 5.1/ 5.2 (SP22BCH) MANUAL

MAIN UNIT OF INTERFACE



Car Brand	Model	Year Range	System
BENZ	NTG5.0 NTG5.1 NTG5.2	2014~	

COMPONENTS

1 MAIN UNIT



2 MAIN CABLE



3 RGB CABLE



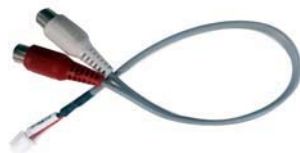
4 IR CABLE



5 LVDS CABLE(A TYPE)



6 HDMI AUDIO CABLE



7 REMOTE CONTROL



8 AV IN/OUT CABLE



8 CAPACITIVE TOUCH CABLE (TPCM6)



※ OPTION ※

9 CAPACITIVE TOUCH GENDER



※ OPTION ※

10 BENZ CAPACITIVE TOUCH FILM



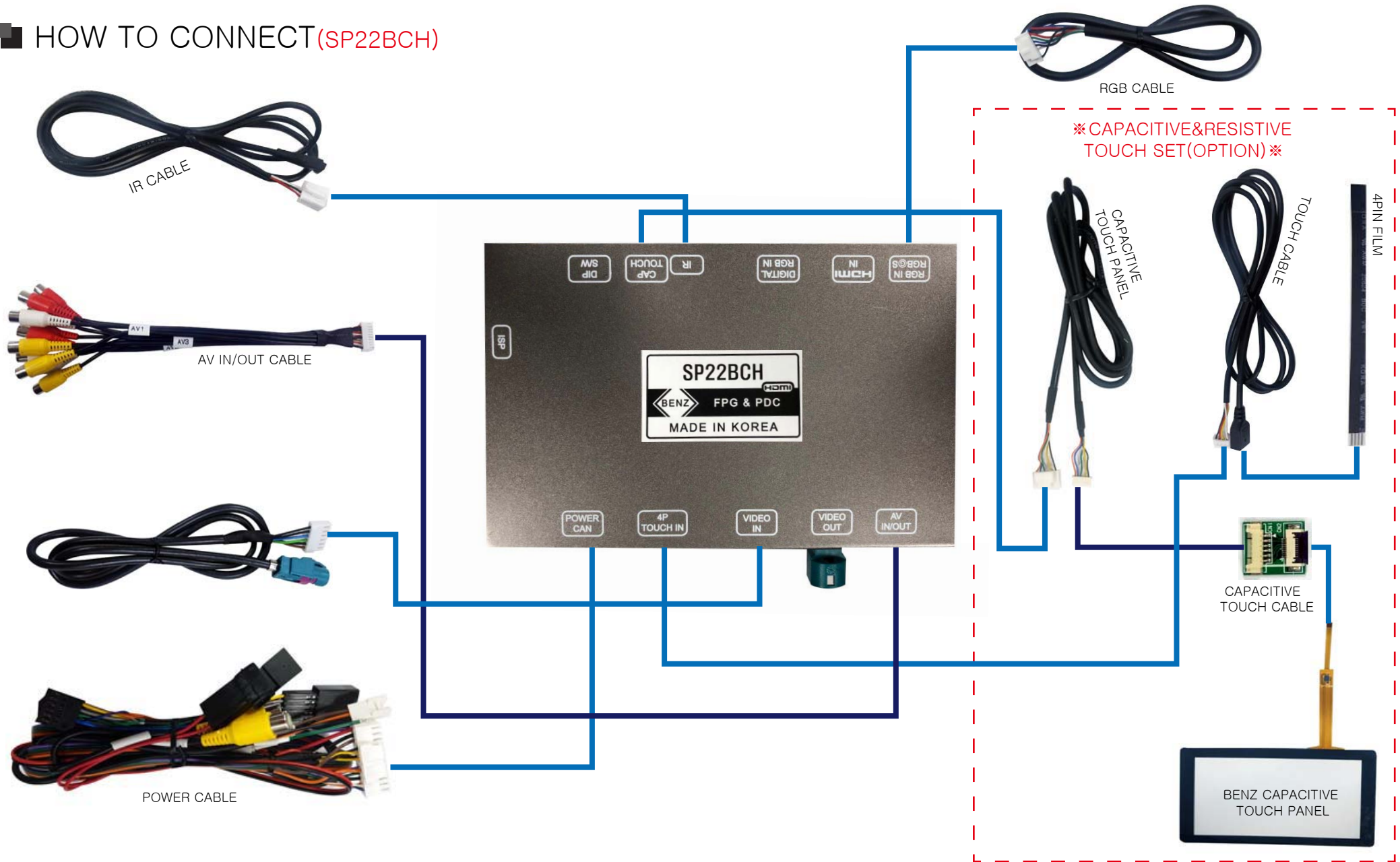
※ OPTION ※

11 HDMI CABLE

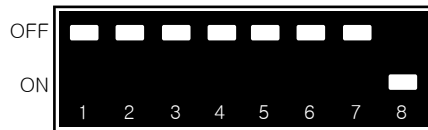


※ OPTION ※

HOW TO CONNECT (SP22BCH)



DIP S/W [OFF : ↑(UP) / ON : ↓(DOWN)]

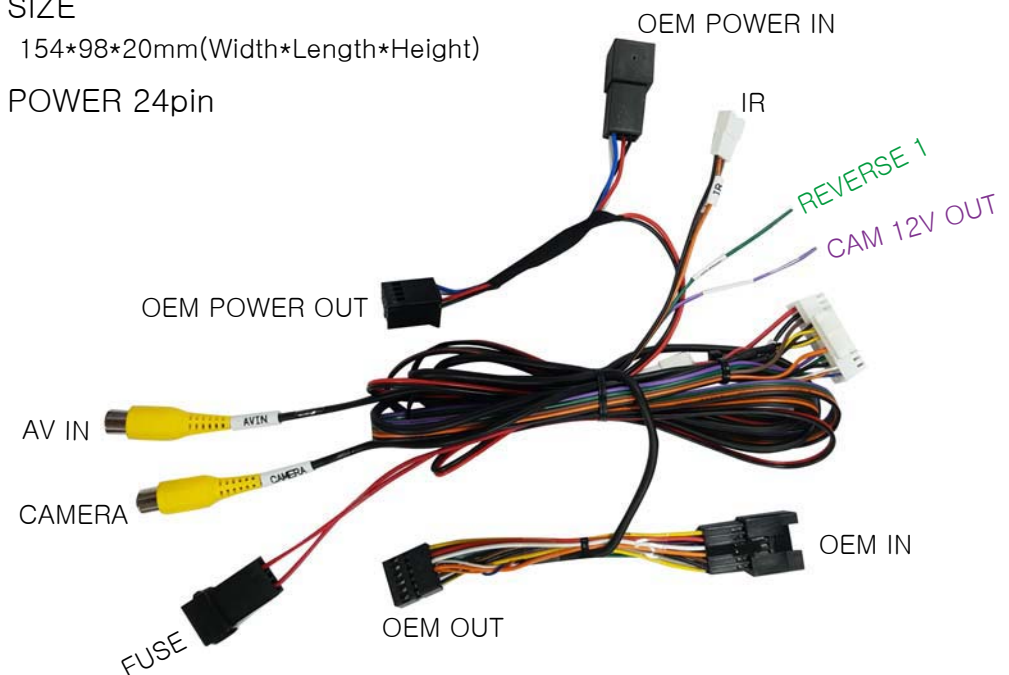


DIP_SW1 : Navigation On/Off
 DIP_SW2,3,5,6,7 : VEHICLE SETTING
 DIP_SW4 : REAR CAMERA On/Off
 DIP_SW8 : On

	C-CLASS 8.4", GLC
	C-CLASS 7"
	S-CLASS 12.3"
	2015 CLS, CLA, B, GLE, E, GLA 8"
	S-CLASS 12.3"(IMPORT DIRECTLY FROM GERMANY)

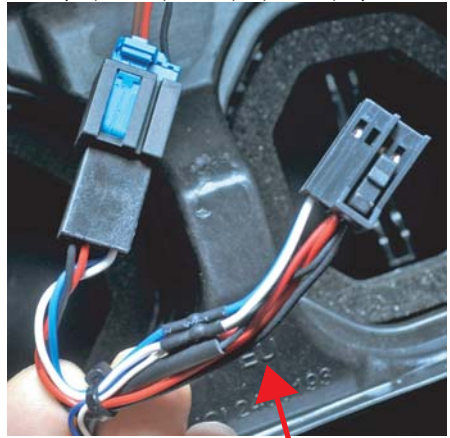
SP22BCH SPEC

- INPUT SPEC
 - 1 x Analog RGB Input(GPS system output)
 - 1 x LVDS Input
 - 1 x LVDS output
 - 1 x CVBS(rear camera)
 - 1 x CVBS(front camera or A/V)
 - 1 x HDMI(THE MODELS WHICH CAN COMPATIBLE WITH HDMI)
 - 3 x A/V Input(Option)
- OUTPUT SPEC
 - 1 x CVBS
 - 1 x Audio L/R
- POWER SPEC
 - Input power : 8VDC ~ 24VDC
 - Consumption : 5WATT
- SIZE
 - 154*98*20mm(Width*Length*Height)
- POWER 24pin

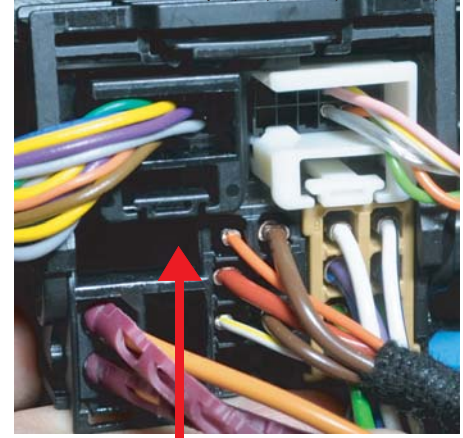


HOW TO CONNECT

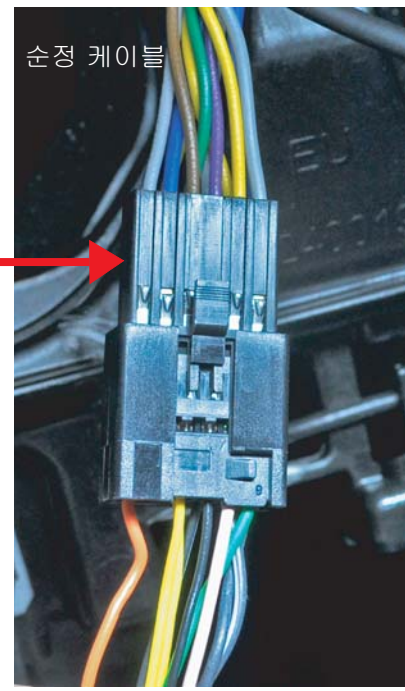
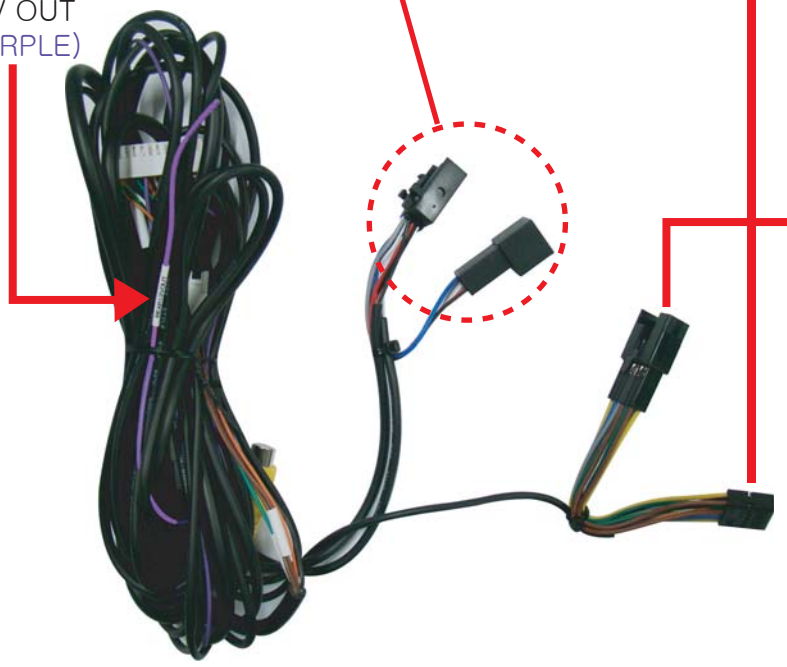
HOW TO CONNECT WITH MONITOR
(C,CLS,CLA,B,GLE,E)



HOW TO CONNECT WITH HEAD UNIT
(S,C,CLS,CLA,B,GLE,E)



CAM REAR
12V OUT
(PURPLE)



HOW TO SWITCH SCREEN

1) HOW TO SWITCH SCREEN (C,CLS,CLA,B,GLE,E)

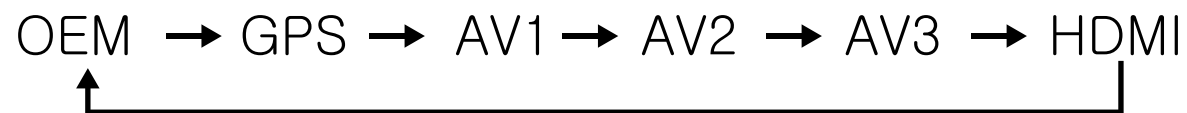


- PRESS **1** BUTTON OF WHEEL STEERING OR PRESS **2** AND **3** NAVI BUTTON OF JOGGLE FOR 2S LONG, IT WILL SWITCH SCREEN.
- IT WILL DIRECT TO ORIGINAL SCREEN WHEN YOU PRESS **4** BUTTON FOR SHORT.

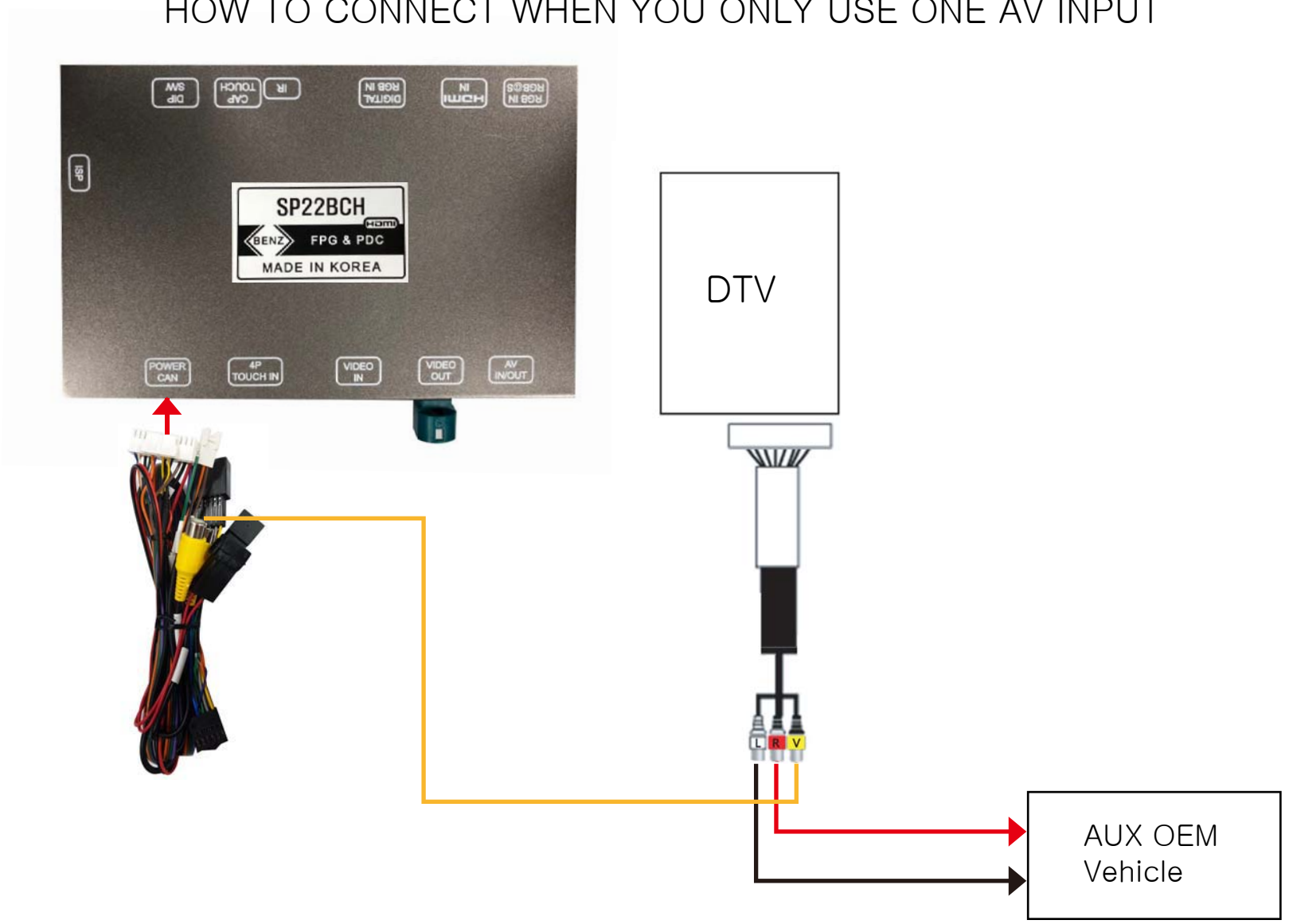
2) HOW TO SWITCH SCREEN S-Class



- PRESS **1** NAVI FOR SHORT OR HOLD
- 2** DIRECT TO 12 O'CLOCK DIRECTION MORE THAN 7S, IT WILL SWITCH SCREEN.



HOW TO CONNECT WHEN YOU ONLY USE ONE AV INPUT



HOW TO CONNECT WHEN YOU USE MORE THAN 2 AV INPUTS

